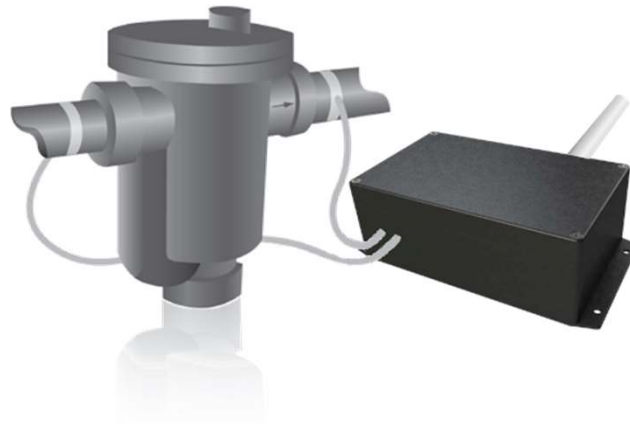


FEATURES:

- Remote monitoring of trap health without wiring costs
- Non-invasive - no process shutdown needed
- Proven industry method for steam trap failure detection
- Simple user interface for failure analysis
- Uses 900MHz LoRa compliant radio communications.
- Standard 110-240VAC or battery powered.
- Battery life up to three years on 15 minute sample rate.
- Low Battery indicator.
- Configurable sample rates from one second to 4 hours.
- Optional NEMA4/IP66 enclosure for outdoor use.
- No new software to install – data can be view through standard browser (requires Green Box Controller).
- FCC, ROHS Compliant.
- Optional connectivity to existing plant or building automation systems via OPC or RESTful API.



Save energy costs by non-invasively monitoring your existing steam traps to remotely detect early failures

Steam trap failures cause you to lose money. Leaking traps increase steam costs and blocked traps can cause pipe damage.

Instead of time-consuming manual audits, the Cypress EnviroSystems Wireless Steam Trap Monitor (WSTM) allows you to remotely monitor steam trap health year round. The WSTM non-invasively attaches to any steam trap in your steam distribution system. Use the Cypress EnviroSystems Green Box Controller to view the overall health of each trap from your PC or existing building or plant automation system.

KEY PRODUCT SPECIFICATIONS:

Data Inputs:	Thermocouples type K (thermocouples, pipe clamps, wires included)
Number of Inputs:	Two (inlet and outlet)
Data Capture Rate:	User selectable from one second to 4 hour sample rate
Wireless Frequency:	902.000 MHz to 928.000 MHz
Wireless Range:	500 to 1,500 ft in typical plant environments
Modulation Method:	FSK, GFSK, and LoRa® Technology modulation
Approvals:	FCC CFR47, Part 15 Subpart C
Power Supply:	Standard 110-240VAC or battery powered (two 3V lithium batteries, type CR123A)
Battery Life:	>1 year at 5 minute sample rate, >3 years at 1 hour sample rate
Vibration:	Up to 4G RMS
Humidity:	10-99% RH, non-condensing
Operating Temperature:	-4°F to 158°F (-20°C to 70°C)
Storage Temperature:	-40°F to 176°F (-40°C to 80°C)
Enclosure:	Rugged extruded aluminum industrial chassis (optional NEMA4/IP66 enclosure)
Dimensions:	5.7" x 2.2" x 1.6" (145mm x 57mm x 42mm)
Weight:	0.51 lbs (230g) including batteries

HEADQUARTERS

6830 via del Oro, Suite 100
 San Jose, CA 95119
 +1 800 544-5411
www.CypressEnviroSystems.com
info@CypressEnviroSystems.com

Cypress EnviroSystems and its logo are trademarks of Cypress EnviroSystems, Inc. The name of any other company, products, or services mentioned herein are for identification purposes only and may be trademarks or service marks of or may be copyrighted by their respective holders.